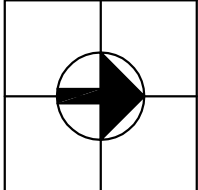
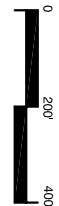


L-0

SHEET:



**LANDSCAPE PLAN**

MSP REDEVELOPMENT PROJECT

JEFFERSON CITY, MISSOURI

PROJECT NUMBER: C 0020-01  
PARSONS PROJECT NUMBER: 738538

State of Missouri MATT BLUNT, GOVERNOR

Office of Administration  
Division of Facilities Management,  
Design and Construction  
David L. Mosby, CFM, Director

MSP Redevelopment Commission

Room 730, Truman Building  
P.O. Box 809  
Jefferson City, Missouri 65102

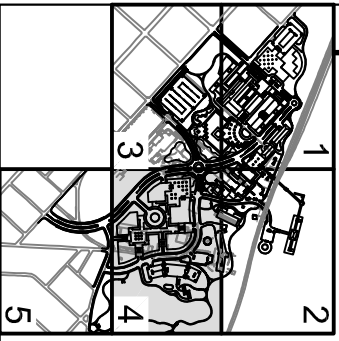
Prepared by:

**PARSONS**  
400 Woods Mill Road South, Suite 300  
St. Louis, Missouri 63017-3427  
In Association with:  
Development Strategies, Inc.  
Trivers Associates, Inc.  
TSI Engineering, Inc.  
William Tao & Associates, Inc.  
George Dickie Associates

DATE: November 2005

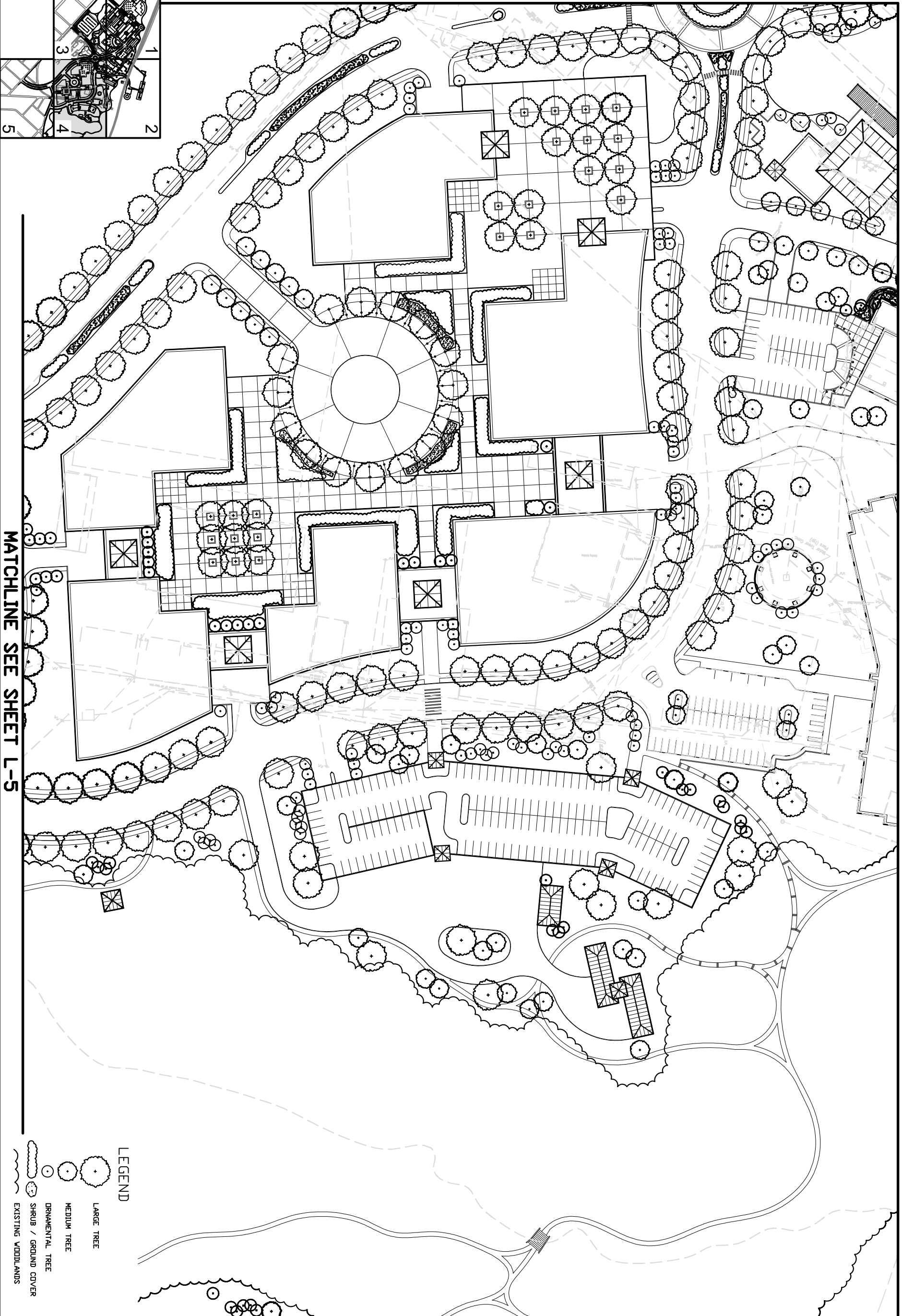
REVISIONS:

MATCHLINE SEE SHEET L-3

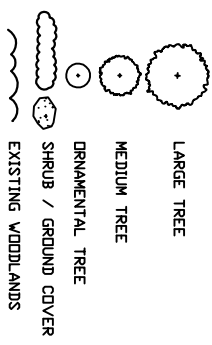


MATCHLINE SEE SHEET L-5

MATCHLINE SEE SHEET L-2



LEGEND



LARGE TREE

MEDIUM TREE

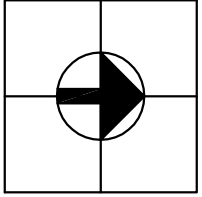
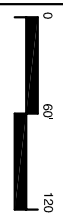
ORNAMENTAL TREE

SHRUB / GROUND COVER

EXISTING WOODLANDS

L-4

SHEET:



LANDSCAPE PLAN

MSP REDEVELOPMENT PROJECT  
JEFFERSON CITY, MISSOURI

PROJECT NUMBER: C 0020-01  
PARSONS PROJECT NUMBER: 738538

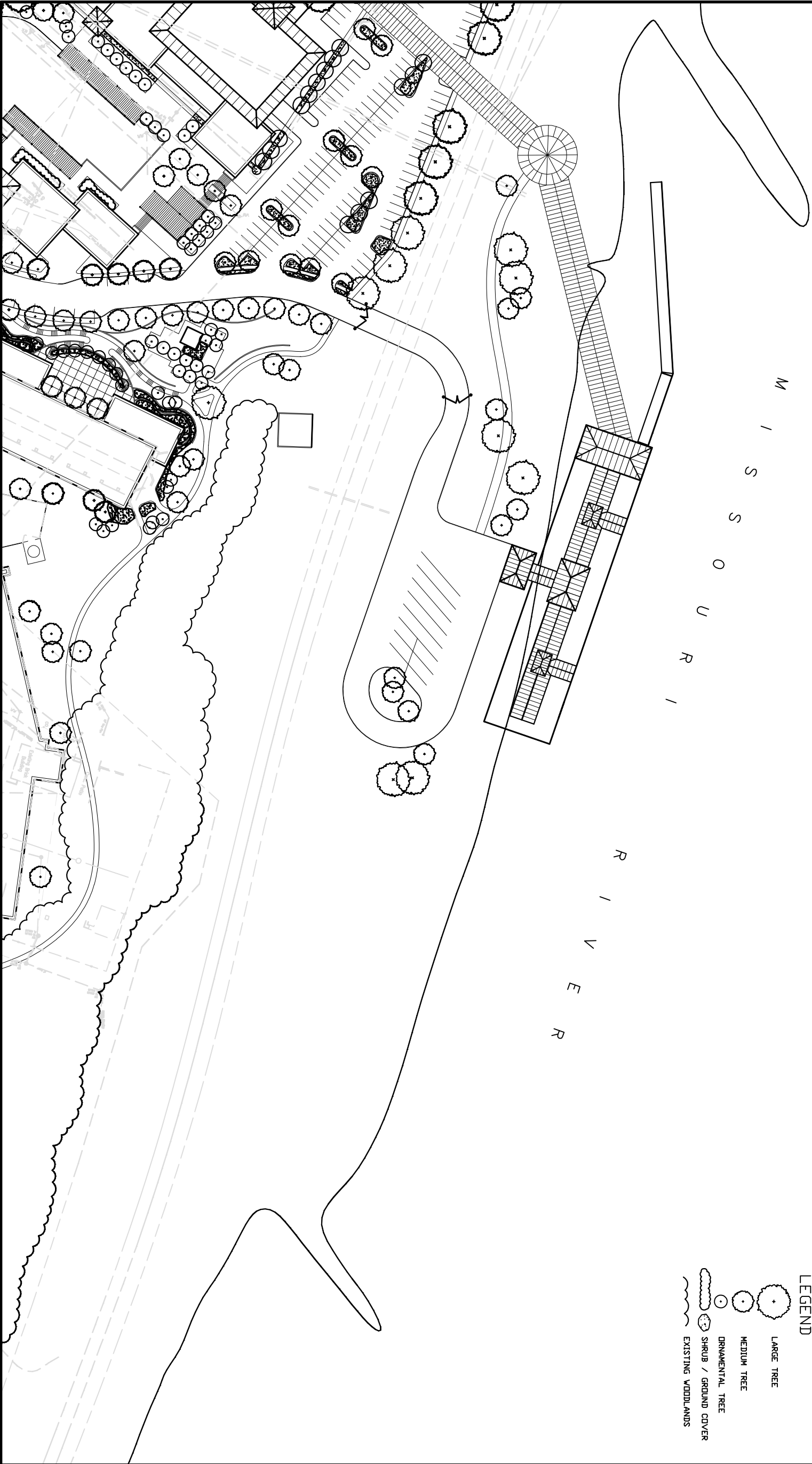
State of Missouri  
Office of Administration  
Division of Facilities Management,  
Design and Construction  
David L. Mosby, CFM, Director  
MSP Redevelopment Commission  
Room 730, Truman Building  
P.O. Box 809  
Jefferson City, Missouri 65102

MATT BLUNT, GOVERNOR

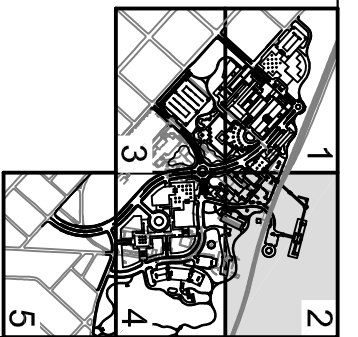
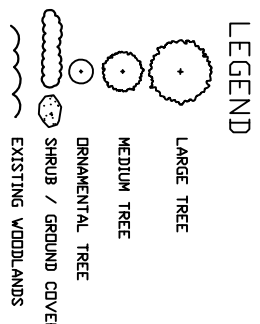
Prepared by:  
PARSONS  
400 Woods Mill Road South, Suite 300  
St. Louis, Missouri 63017-3427  
In Association with:  
Development Strategies, Inc.  
Trivers Associates, Inc.  
TSI Engineering, Inc.  
William Tao & Associates, Inc.  
George Dickie Associates

DATE: November 2005  
REVISIONS:

MATCHLINE SEE SHEET L-1

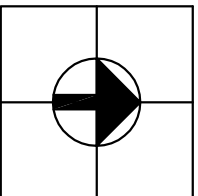
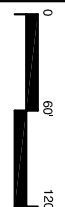


MATCHLINE SEE SHEET L-4



L-2

SHEET:



### LANDSCAPE PLAN

MSP REDEVELOPMENT PROJECT

JEFFERSON CITY, MISSOURI

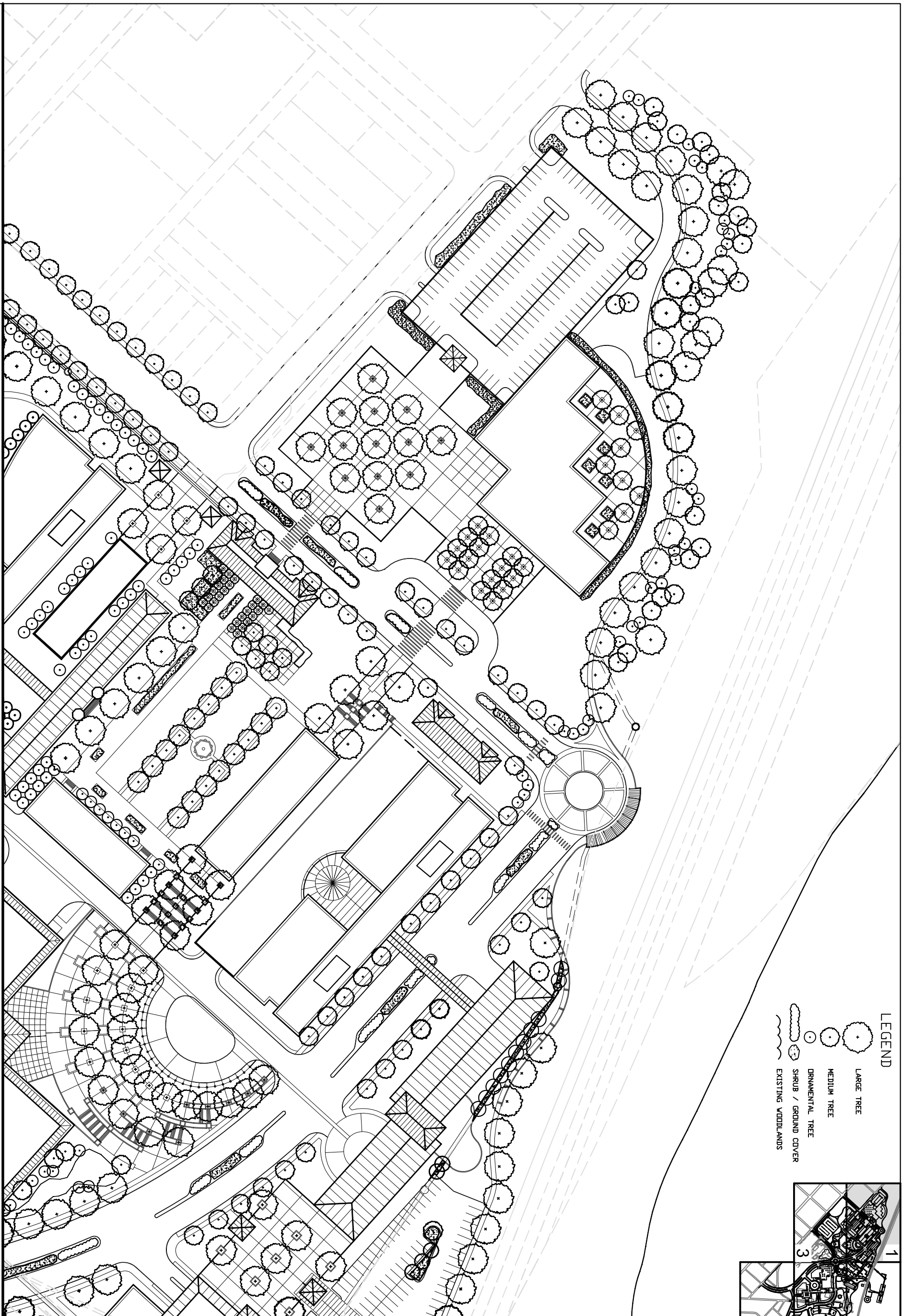
PROJECT NUMBER: C 0020-01  
PARSONS PROJECT NUMBER: 738538

State of Missouri MATT BLUNT, GOVERNOR  
 Office of Administration  
 Division of Facilities Management,  
 Design and Construction  
 David L. Mosby, CFM, Director  
 MSP Redevelopment Commission  
 Room 730, Truman Building  
 P.O. Box 809  
 Jefferson City, Missouri 65102

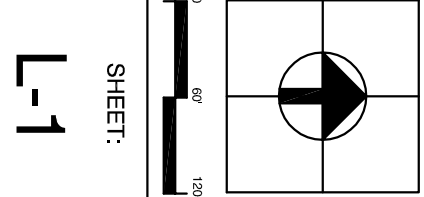
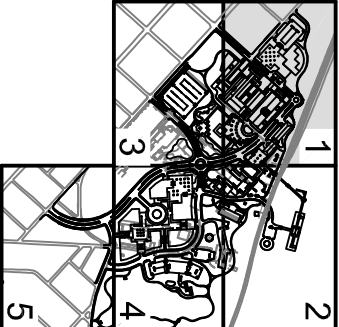
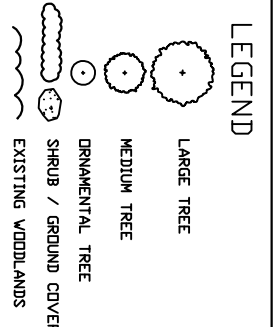
Prepared by:  
**PARSONS**  
 400 Woods Mill Road South, Suite 300  
 St. Louis, Missouri 63017-3427  
 In Association with:  
 Development Strategies, Inc.  
 Trivers Associates, Inc.  
 TSI Engineering, Inc.  
 William Tao & Associates, Inc.  
 George Dickie Associates

DATE: November 2005  
REVISIONS:

MATCHLINE SEE SHEET L-3



MATCHLINE SEE SHEET L-2



**LANDSCAPE PLAN**

MSP REDEVELOPMENT PROJECT

JEFFERSON CITY, MISSOURI

PROJECT NUMBER: C 0020-01  
PARSONS PROJECT NUMBER: 738538

State of Missouri MATT BLUNT, GOVERNOR

Office of Administration  
Division of Facilities Management,  
Design and Construction  
David L. Mosby, CFM, Director

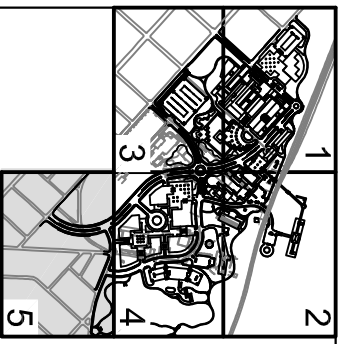
MSP Redevelopment Commission

Room 730, Truman Building  
P.O. Box 809  
Jefferson City, Missouri 65102

Prepared by:  
**PARSONS**  
400 Woods Mill Road South, Suite 300  
St. Louis, Missouri 63017-3427

In Association with:  
Development Strategies, Inc.  
Trivers Associates, Inc.  
TSI Engineering, Inc.  
William Tao & Associates, Inc.  
George Dickie Associates

DATE: November 2005  
REVISIONS:

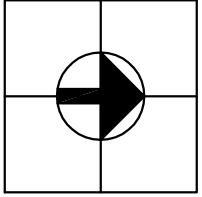
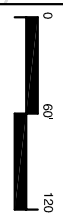


- LEGEND**
- LARGE TREE
  - MEDIUM TREE
  - ORNAMENTAL TREE
  - SHRUB / GROUND COVER
  - EXISTING WOODLANDS

MATCHLINE SEE SHEET L-4

**L-5**

SHEET:



**LANDSCAPE PLAN**

MSP REDEVELOPMENT PROJECT  
JEFFERSON CITY, MISSOURI

PROJECT NUMBER: C 0020-01  
PARSONS PROJECT NUMBER: 738538

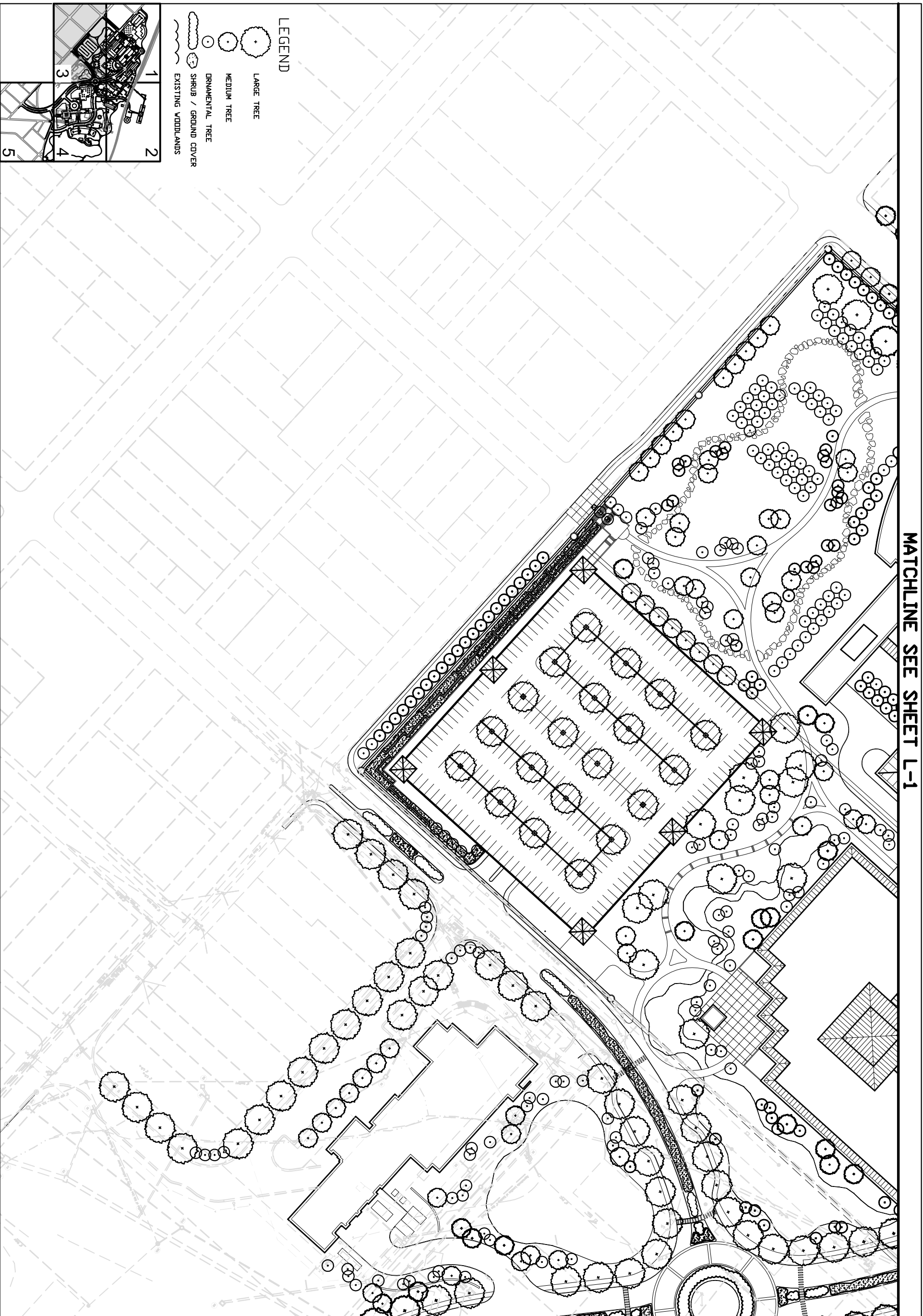
State of Missouri MATT BLUNT, GOVERNOR

Office of Administration  
Division of Facilities Management,  
Design and Construction  
David L. Mosby, CFM, Director  
MSP Redevelopment Commission  
Room 730, Truman Building  
P.O. Box 809  
Jefferson City, Missouri 65102

Prepared by:

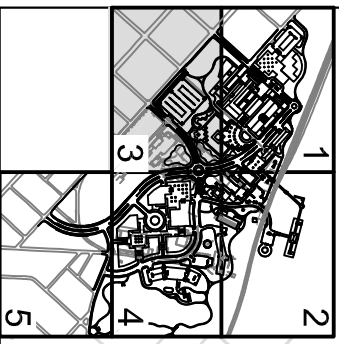
**PARSONS**  
400 Woods Mill Road South, Suite 300  
St. Louis, Missouri 63017-3427  
In Association with:  
Development Strategies, Inc.  
Trivers Associates, Inc.  
TSI Engineering, Inc.  
William Tao & Associates, Inc.  
George Dickie Associates

DATE: November 2005  
REVISIONS:



MATCHLINE SEE SHEET L-1

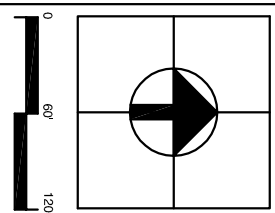
MATCHLINE SEE SHEET L-4



- LEGEND**
- LARGE TREE
  - MEDIUM TREE
  - ORNAMENTAL TREE
  - SHRUB / GROUND COVER
  - EXISTING WOODLANDS

L-3

SHEET:



**LANDSCAPE PLAN**

MSP REDEVELOPMENT PROJECT  
JEFFERSON CITY, MISSOURI

PROJECT NUMBER: C 0020-01  
PARSONS PROJECT NUMBER: 738538

State of Missouri MATT BLUNT, GOVERNOR  
Office of Administration  
Division of Facilities Management,  
Design and Construction  
David L. Mosby, CFM, Director  
MSP Redevelopment Commission  
Room 730, Truman Building  
P.O. Box 809  
Jefferson City, Missouri 65102

Prepared by:  
**PARSONS**  
400 Woods Mill Road South, Suite 300  
St. Louis, Missouri 63017-3427  
In Association with:  
Development Strategies, Inc.  
Trivers Associates, Inc.  
TSI Engineering, Inc.  
William Tao & Associates, Inc.  
George Dickie Associates

DATE: November 2005  
REVISIONS: